

RERA REGN. NO.
UPRERAPRJ263165/10/2024
Rera Website: www.up-rera.in/projects



REDEFINING ELEGANT LIVING



Scan the QR for
Walkthrough



Scan the QR for
Virtual Tour

SAPPHIRE INFRAVENTURES (P) LTD.

Head Office : G.F.-1, Sapphire Homes, 2 Fawn Brake Avenue, S.N. Marg, Lucknow - 226001
Sapphire Site Office : Imperial Estates by Sapphire, Kasimpur Biruha, Opp. SMS College, Lucknow-Sultanpur National Highway, Lucknow.

Contact No.: 8882 235 235

ACCOUNT DETAILS: Name of the Account: Sapphire Infraventures Pvt Ltd-Collection Account-Imperial Estates by Sapphire | **Account No.:** 43319197189
Bank Name: State Bank of India, **Branch Name:** SME Hazratganj, Lucknow | **IFSC Code:** SBIN0016882

Disclaimer: Information, images, and visuals are only indicative of the envisaged developments and the same are subject to change in actual as per approvals. The views shown in the pictures may vary over the period of time and does not guarantee the same. All intending purchaser(s) are requested to inspect all plans and approvals and visit the project site and apprise themselves of all plans and approvals and other relevant information obtained from time to time from respective authority. The promoter holds no responsibility for its accuracy and shall not be liable to any intending purchaser or anyone for the changes/alterations/improvements so made. The project specifications are only indicative & some of these may be changed in consultation with the Architect at the sole discretion of the Company. Visual representations shown in this brochure are purely conceptual. Elevations, Specifications, Site Plans etc. of the township are tentative and subject to variation and modification by the company at its sole discretion.



REDEFINING ELEGANT LIVING

THE WORLD OF SAPPHIRE

At Sapphire Infraventures (P) Ltd. we believe that urbanization is not mere filling of space by cement and concrete, it is evolved with living and breathing entities shaped by the experiences they offer. Our mission is to enrich lives by curating exceptional developments across residential, commercial, retail, hospitality and social infrastructure domains.

Through meticulous attention to detail, innovative design, and a commitment to sustainability, we redefine urban living. Our projects boast world-class amenities, luxurious finishes, and a dedication to enhance the natural environment.

Driven by a passion for excellence, we strive to create vibrant communities that inspire an imperial lifestyles. With delivered projects to the satisfactions of our customers, we continue to set new standards in Imperial and elegant living.



REFERENCE IMAGE

EMBRACE A LIFESTYLE
OF MAJESTIC SPLENDOR
AND SOPHISTICATION
AT IMPERIAL ESTATES

LIMITED TOWERS WITH G+12 FLOORS,
GATEWAY TO SERENE AND STYLISH LIVING.

IMPERIAL
ESTATES
BY SAPPHIRE



Exceptional Luxury
UNMATCHED QUALITY

3 & 4 BHK Apartments

Step into a visionary realm with Imperial life, where future readiness harmonizes seamlessly with world-class amenities.

Designed to elevate your lifestyle, these 3 and 4 BHK apartments offer cutting-edge facilities and a grandeur living experience. Every corner reflects the finest in modern design, and each day brings the promise of unparalleled comfort, convenience, and sophistication.

DROP-OFF ZONE

ARRIVAL IN STYLE
ELEGANCE IN EACH STEP,
LUXURY IN EACH DETAIL.

Hassle free parking with adequate open, stilt and covered parking spaces, with dedicated parking for visitors.



Where life is more lively
than your imagination



Discover a lifestyle that resonates with energy and elegance, where every corner invites you to live your dreams to the fullest. Welcome to Imperial Life, where living is more lively than your vivid imagination.





ARTISTIC IMAGE

ENHANCING
YOUR LIVING
EXPERIENCE
WITH SPACIOUS &
STUNNING
BALCONY VIEWS,
WITH ULTRA
MODERN AMENITIES



REFERENCE IMAGE

Where craftsmanship
defines creativity



A spell-binding vision translated into design, where every detail captivates and inspires. Immerse yourself in a world where creativity meets craftsmanship, creating spaces that redefine luxury and elegance.

FUTURE
READY WITH
WORLD CLASS
AMENITIES

Imperial Life offers
unparalleled luxury
with futuristic amenities
designed to elevate your lifestyle.

AMENITIES



CLUB



SWIMMING POOL



KIDS PLAY AREA



BADMINTON COURT



JOGGING TRACK



CENTRAL LAWN



OPEN GYM



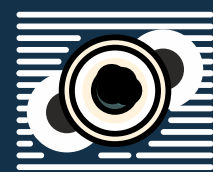
AMPHITHEATRE



HALF BASKET BALL COURT



TENNIS COURT



ZEN GARDEN



POOL TABLE



TABLE TENNIS



GYMNASIUM



YOGA



INDOOR GAMES



BILLIARDS



BEAUTIFUL LANDSCAPES



FOUNTAINS / WATER BODY



AMPLE CAR PARKING



CONVENIENCE SHOPS



24X7 POWER BACKUP



EV CHARGING POINT



24X7 SECURITY

SWIMMING POOL

The Imperial swimming pool is a luxurious oasis, offering elegant design for ultimate relaxation, fitness and indulgence. A pool with reserved access to resident's only.

KIDS PLAY AREA

A safe, vibrant play area where kids can explore, learn, and have fun.
Added security with 24x7 surveillance through CCTV





ARTISTIC IMAGE

TENNIS COURT

Enjoy the perfect serve
on a court built for
excellence.



ARTISTIC IMAGE

CLUB HOUSE

Step into our vibrant clubhouse, your hub for relaxation and community. Featuring modern amenities such as a pool, fitness center, and versatile spaces for gatherings, it's the perfect setting to unwind, socialize, and make lasting memories with friends and neighbors.

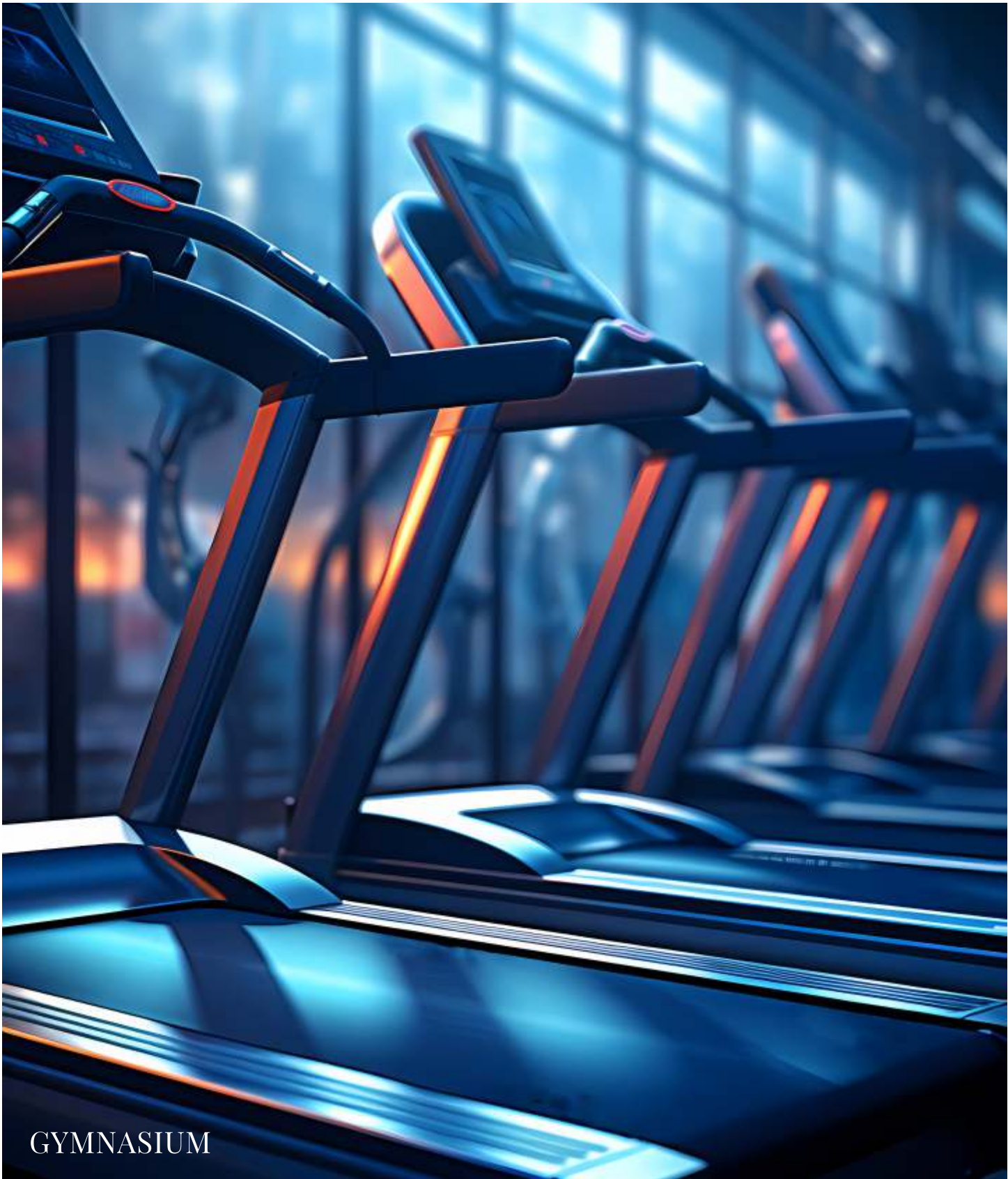
FEEL THE JOY OF
A COMPLETE LIFE

THE CLUBHOUSE
Escape, Relax, Connect

Experience leisure and luxury at our state-of-the-art club house, designed for relaxation and socializing.



CLUBHOUSE AMENITIES



GYMNASIUM



YOGA AREA

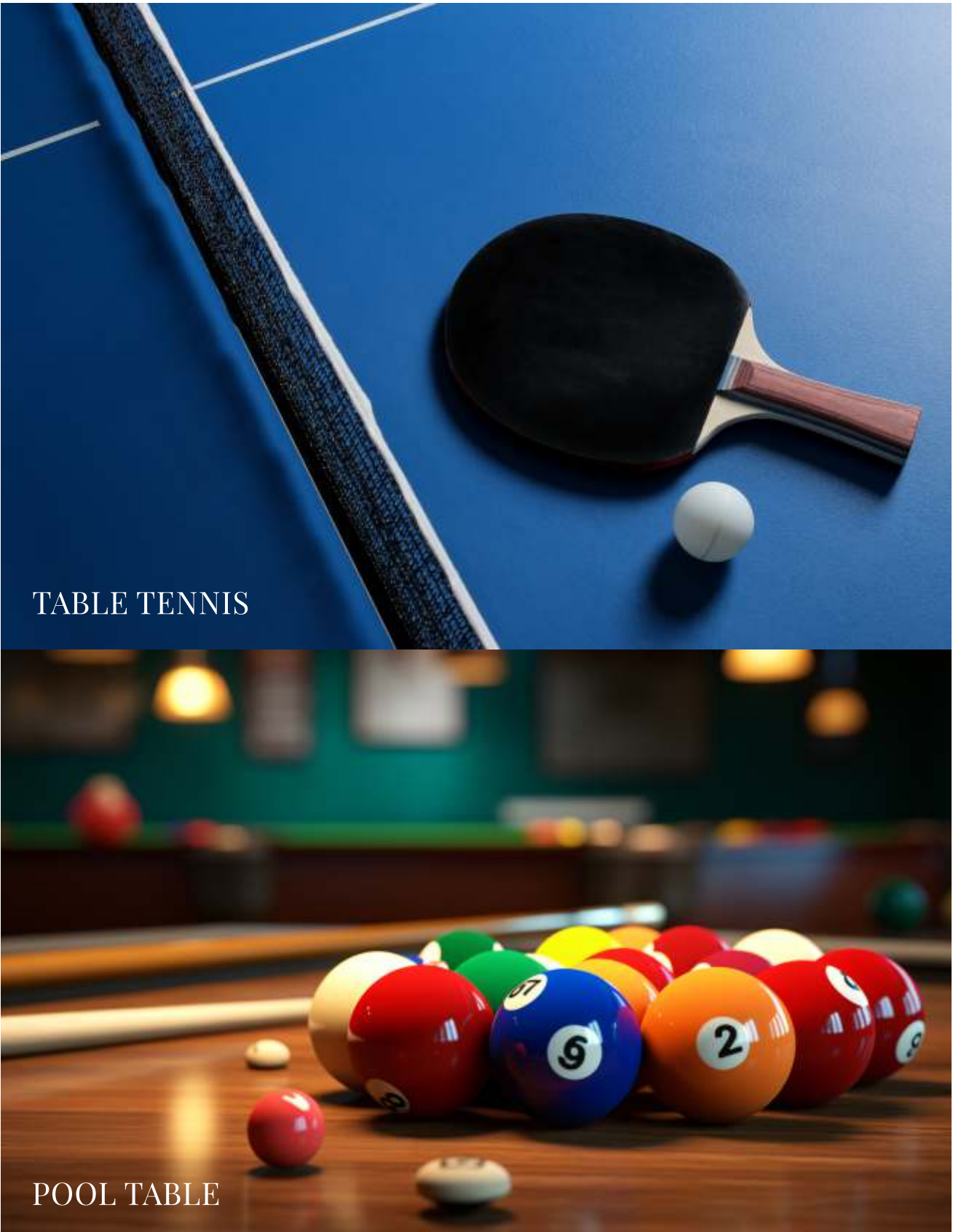


TABLE TENNIS

POOL TABLE



Enhancing your living room experience
with spaciousness and stunning views

REFERENCE IMAGE

HOMES THAT REFLECT
Everlasting Radiance



The residences at Imperial Estates township are designed to inculcate the
never-ceasing splendour of nature in every square feet.



ARTISTIC IMAGE

MASTER PLAN LAYOUT

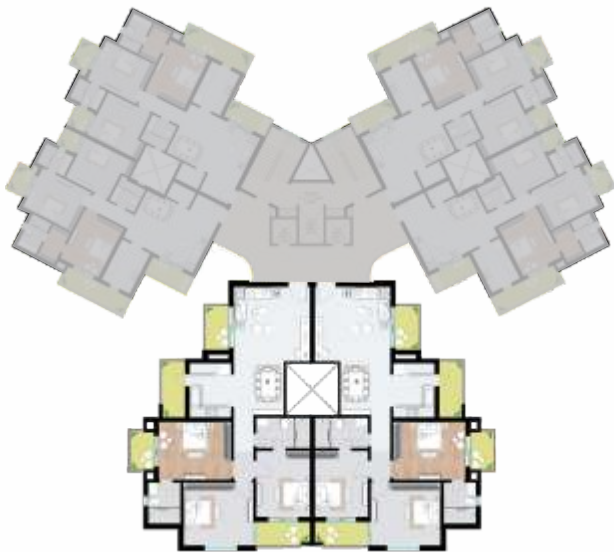
LEGENDS

- 1. MOUND SEATING
- 2. SCULPTURE CIRCLE I
- 3. FEATURE WALL WITH WATER FEATURE
- 4. WATER BODY SCULPTURE CIRCLE II
- 5. RAMP TOP TRELLIS
- 6. DROP OFF WITH FEATURE WALL/SCULPTURE
- 7. FUN HANGOUT ZONE (SEATING POCKET)
- 8. WATER FEATURE & FOUNTAIN
- 9. SWIMMING POOL WITH DECK
- 10. PERGOLA SEATING
- 11. CHILDREN'S PLAY AREA
- 12. BADMINTON COURT
- 13. STEPPED SEATING
- 14. JOGGING TRACK
- 15. CENTRAL LAWN
- 16. OPEN GYM
- 17. SURPRISE FOUNTAIN
- 18. AMPHITHEATRE
- 19. REFLEXOLOGY PATH
- 20. HALF BASKET BALL
- 21. TENNIS COURT
- 22. ZEN GARDEN



3BHK

TYPICAL FLOOR PLAN (TYPE-1)



UNIT	CARPET AREA	BUILT-UP AREA
Sq. Mt.	96.39	121.83
Sq. Ft.	1037.5	1311.38



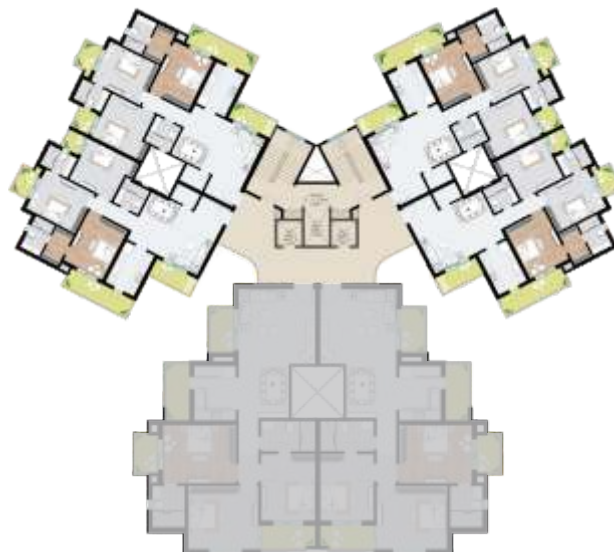
3 BEDROOMS + WARDROBE

4 BALCONIES

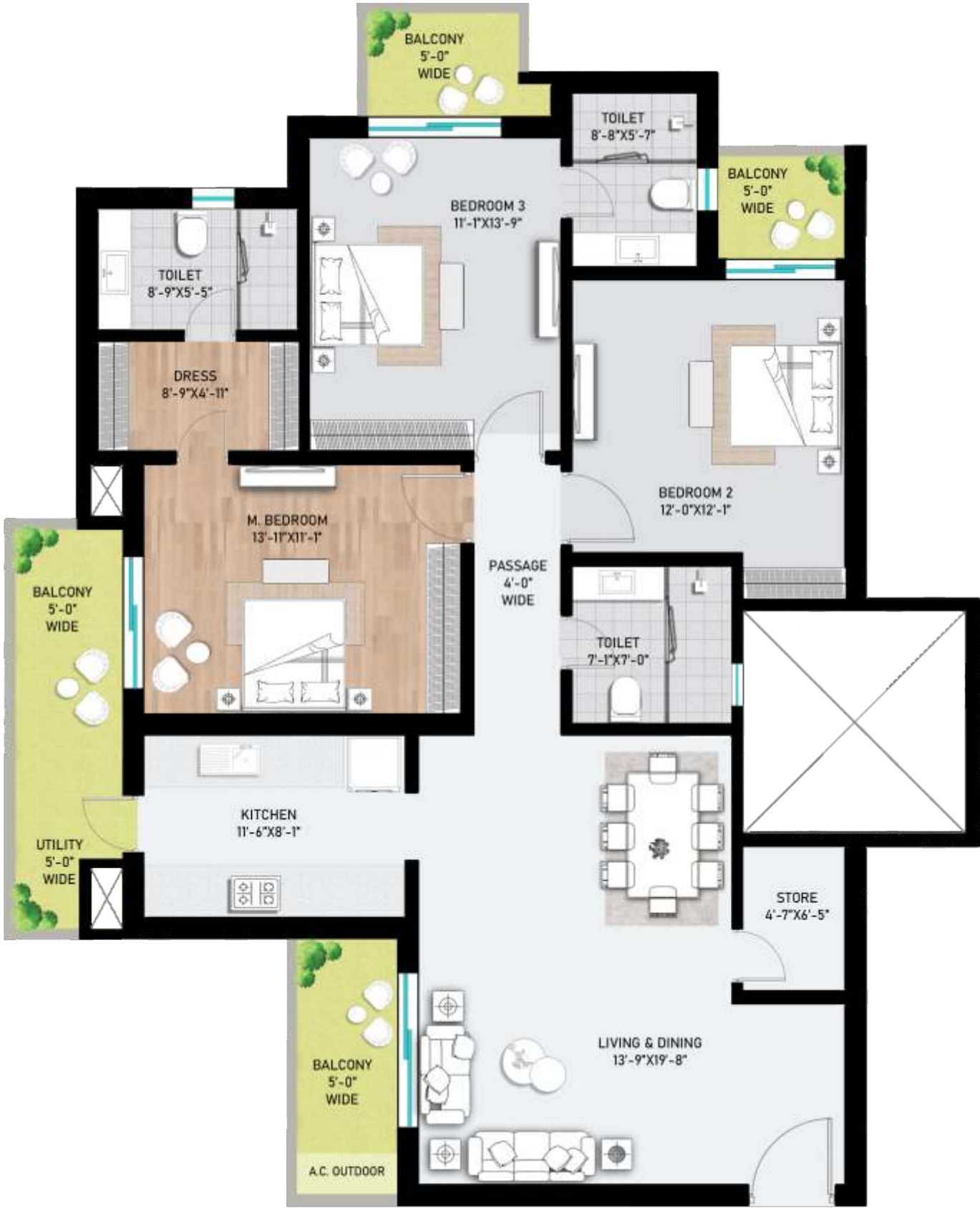
SPACIOUS LIVING ROOM

3BHK

TYPICAL FLOOR PLAN (TYPE-2)



UNIT	CARPET AREA	BUILT-UP AREA
Sq. Mt.	109.22	137.73
Sq. Ft.	1175.6	1482.52



3 BEDROOMS + WARDROBE + STORE

4 BALCONIES

SPACIOUS LIVING ROOM



4BHK
TYPICAL FLOOR PLAN



UNIT	CARPET AREA	BUILT-UP AREA
Sq. Mt.	173.12	219.48
Sq. Ft.	1863.46	2362.48



ONLY 2 APARTMENTS PER FLOOR

4 BEDROOMS + WARDROBE | 3 SPACIOUS BALCONIES | SERVANT ROOM | POWDER TOILET

LOCATION AND
CONNECTIVITY TO
IMPERIAL ESTATE



06 Mins
Purvanchal
Expressway



11 Mins
Kisan
Path



11 Mins
HCL
IT City



16 Mins
Phoenix
Palassio Mall



16 Mins
International
Cricket Stadium



20 Mins
Lulu
Mall



22 Mins
Medanta
Hospital



22 Mins
Gomti
Nagar



26 Mins
Shaheed
Path



30 Mins
International
Airport



38 Mins
Hazratganj



39 Mins
Alambagh Bus
& Metro Station

SCAN ME

TO VIEW
PROJECT LOCATION



SPECIFICATIONS

LIVING ROOM
Walls: Plastic Emulsion Paint
Floor: Vitrified Tiles of size 600 x 600 mm
Door: Main Door- Hard Wood frame with Factory Laminated Flush Panels
Window/Glazing: Branded UPVC with Glass Panels



BEDROOM
Walls: Plastic Emulsion Paint
Floor: Vitrified Tile of size 600 x 600 mm
Door: Hard Wood frame with Factory Laminated Flush Panels
Window/Glazing: Branded UPVC with Glass Panels



TOILETS
Walls: Ceramic Tiles 300 x 600mm & Oil Bound Distemper Paint
Floor: Anti-Skid Ceramic Tiles 300 x 300 mm
Door: Hard Wood frame with Factory Laminated Flush Panels
Window/Glazing: Branded UPVC with Glass Panels
Others: Wall Mounted WC, Basins, Branded CP Fittings



MASTER BEDROOM
Walls: Plastic Emulsion Paint
Floor: Wooden Laminated floor of AC-3 Grade
Door: Hard Wood frame with Factory Laminated Flush Panels
Window/Glazing: Branded UPVC with Glass Panels

KITCHEN
Walls: 2Ft high Ceramic Tiles above counter & rest Oil Bound Distemper Paint
Floor: Ceramic Tiles 300 x 300 mm
Door: Hard Wood frame with Factory Laminated Flush Panels
Window/Glazing: Branded UPVC with Glass Panels

BALCONIES
Floor: Anti-Skid Ceramic Tiles of Size 300 x 300 mm
Door: Branded UPVC with Glass Panes

LIFT LOBBY
Floor Granite on Ground Floor and Kota Stone on Staircase and above floors

EXTERNAL
Walls: Long Lasting Weatherproof Exterior Paint